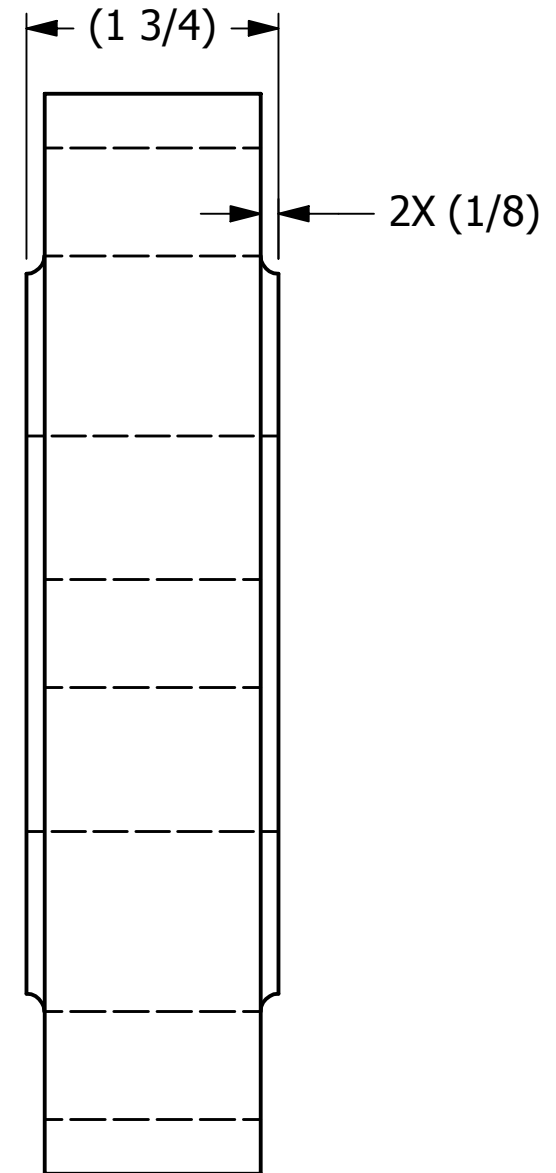
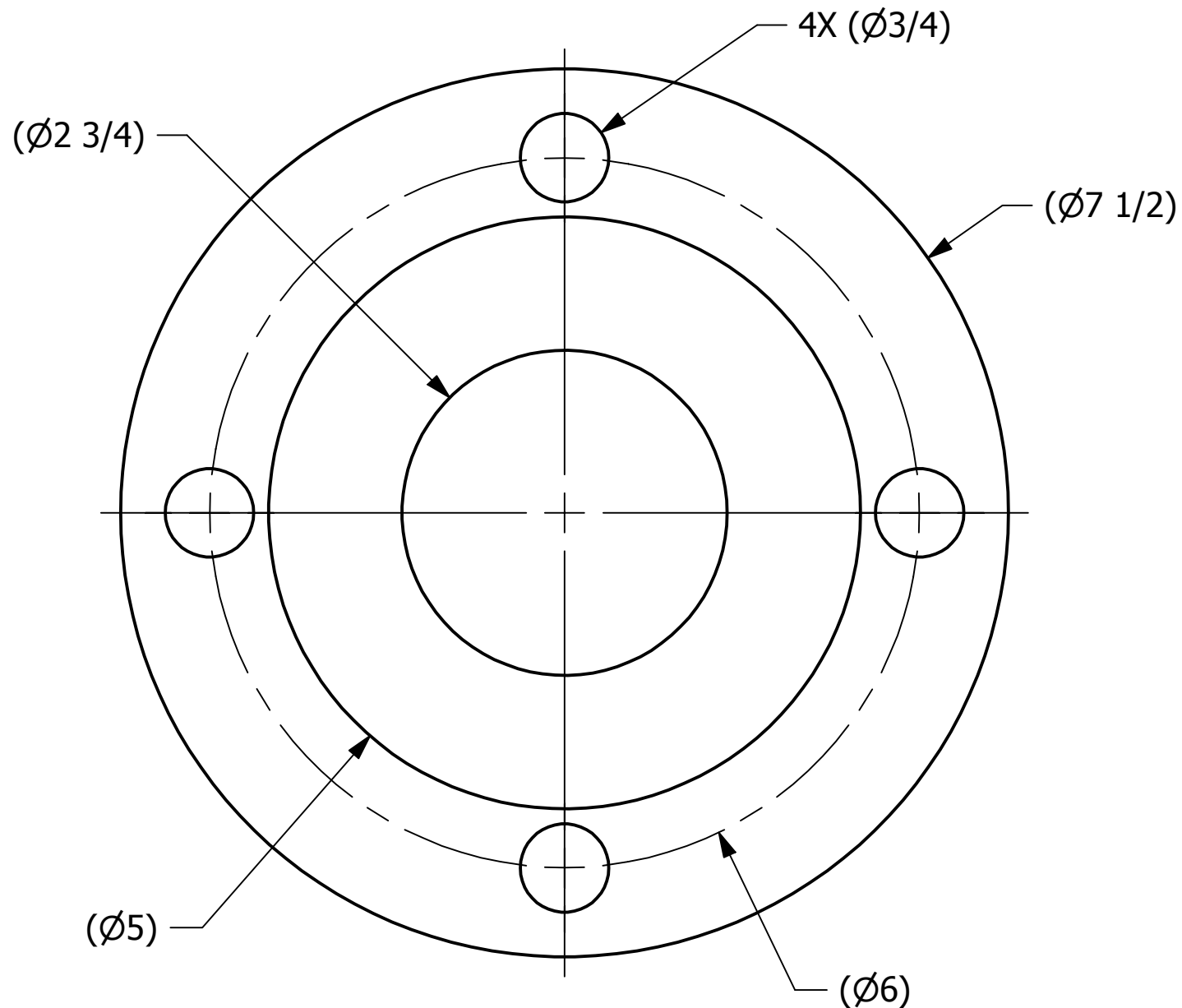


4 3 2 1



SALES DRAWING

SALES DRAWING

B

B

A

A

REV	BY	DATE	DESCRIPTION
C	WEB	7-31-17	ADDED NOTE
B	TAK	4-28-14	REPLACED SHT2ACCL W/ HS3SGFLAB
A	JG	4-21-14	UPDATED TO CURRENT STANDARDS

<small>UNLESS OTHERWISE SPECIFIED DIMENSIONAL TOLERANCES</small> FRACTIONAL: ±1/16 X.XX: ±.03 X.XXX: ±.015 ANGULAR: ±1° <small>DEBURR ALL SHARP EDGES. ALL MACHINED SURFACES TO HAVE A 125 RMS FINISH UNLESS NOTED OTHERWISE.</small>	DRAWN BY:	ACC
	CHECKED BY:	RB
	PROTOTYPE BY:	ACC
	PROTOTYPE DATE:	12/17/2003
	APPROVED FOR PRODUCTION BY:	ACC
THIRD ANGLE PROJECTION	PRODUCTION DATE:	12/17/2003

SALCO PRODUCTS, INC.		
PART NAME: SIGHT GLASS FLANGE 3"		
MATERIAL: ACRYLIC		
PROJECT #: 030708	SHEET #: 1 OF 1	SCALE: 3:4
DRAWING #: B18634	PART #: HS3SGFLA	

THIS PRINT, PROPERTY OF SALCO PRODUCTS INC., CONTAINS PROPRIETARY INFORMATION AND MUST NOT BE COPIED, REPRODUCED, OR USED DETRIMENTALLY TO OUR INTEREST.

4 3 2 1